

Basics of Research SECEN meeting

Lee Tomlinson

Research and Development Manager
Lead Nurse Research



The difference...

Clinical audit

- Clinical audit is about quality and finding out if best practice is being practised.
- Clinical audit tells us whether we are doing what we should be doing and how well we are doing it.

Research

- Research is about obtaining new knowledge and finding out what treatments are the most effective.
- Research tells us what we should be doing.



Research is important to patients

97% of the public believe it's important for the NHS to support research into new treatments

93% want their local NHS to be encouraged or required to support research

72% would like to be offered opportunities to be involved in trials of new medicines or treatments, if they suffered from a health condition that affects their day-to-day life

Association of Medical Research Charities,
Ipsos MORI poll, published June 2011



Benefits to patients

Additional treatment options

Actively helping to drive up standard of healthcare

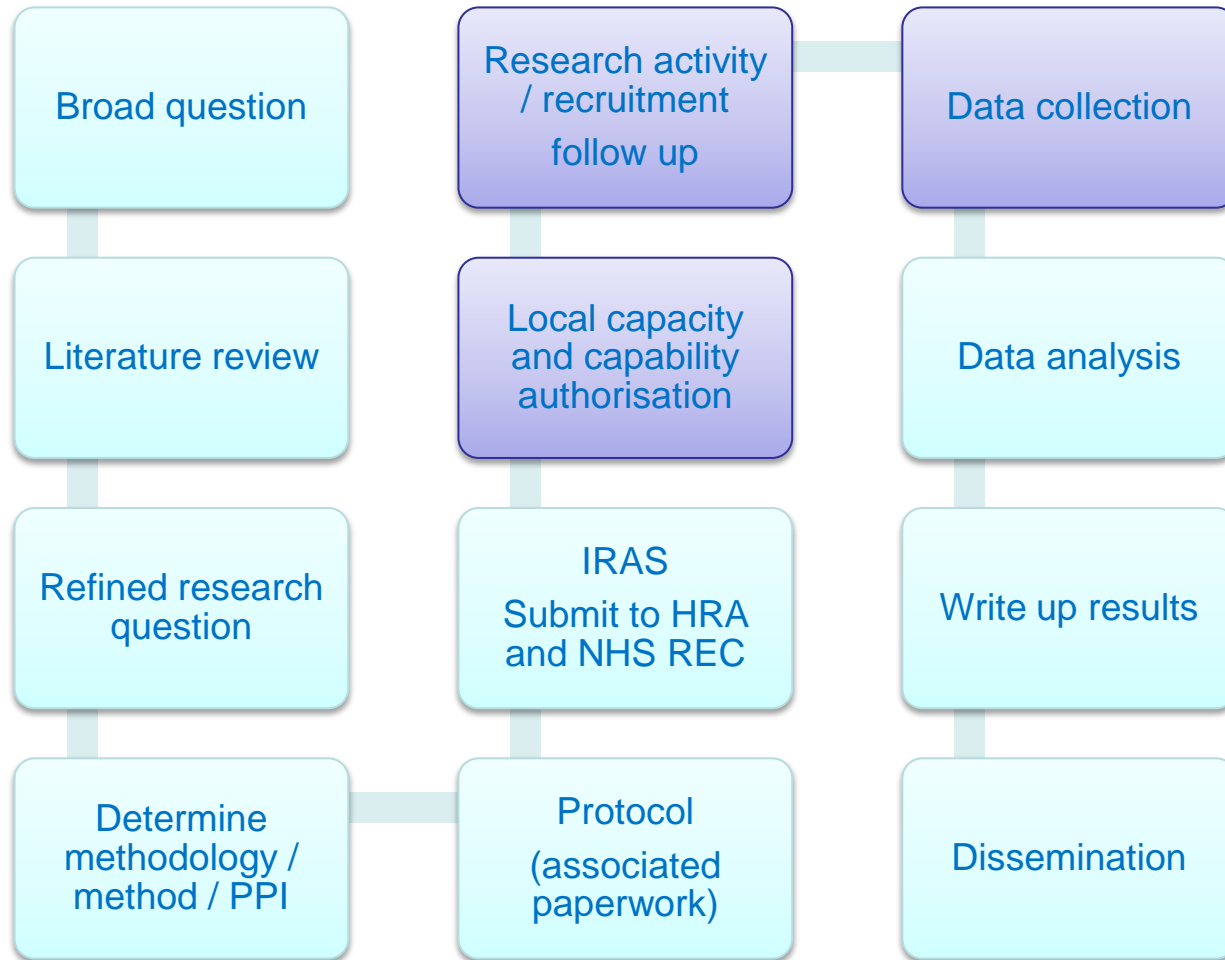


understanding of condition

additional contact with health professionals

giving something back





IRAS – Integrated Research Application System: HRA – Health Research Authority: NHS REC – Research Ethics Committee: PPI – Patient and Public Involvement



Divisions & Specialty Groups

Kent Community Health

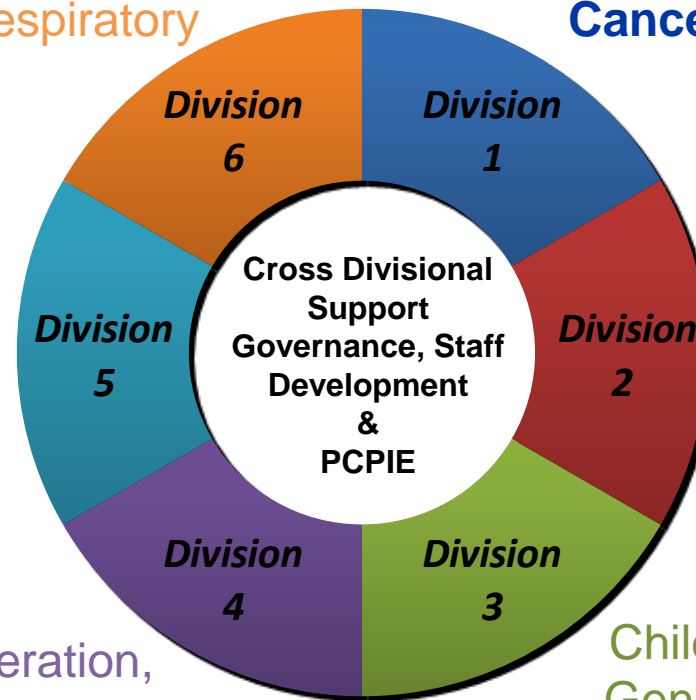


NHS Foundation Trust

Anaesthesia, perioperative medicine
& Pain management, Critical care
Emergencies Surgery, ENT, Ophthalmology,
Infectious disease, Hepatology, Respiratory
Gastroenterology

Primary care, Ageing,
Dermatology, Public Health,
Health Services & Delivery
Research, Oral health and
Dentistry, Musculoskeletal

Dementia and Neurodegeneration,
Mental Health, Neurological Disorders



Cancer

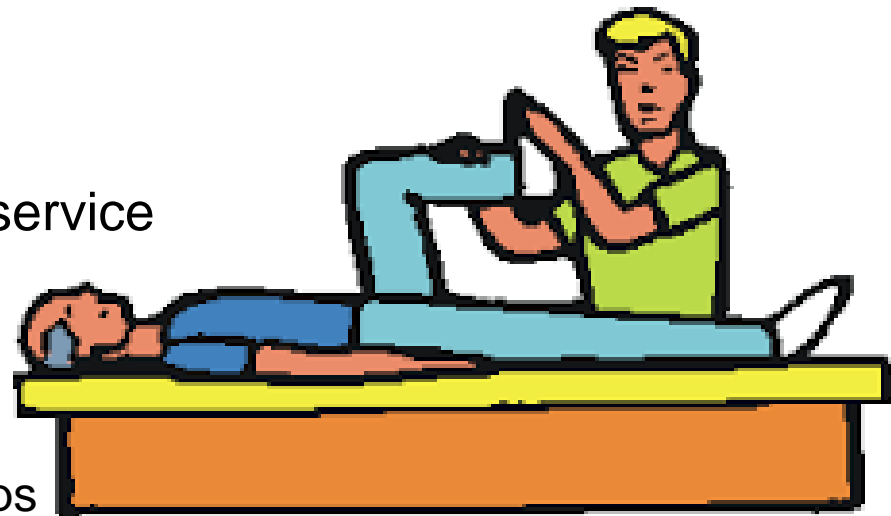
**Cardiovascular
Diabetes
Stroke
Diabetes &
Endocrine
Renal**

Children
Genetics
Haematology
Reproductive Health
& Childbirth



Clinical question ...

- Physiotherapist considering a new treatment.
 - Research experience?
 - Current standard
 - Does this service reach a predetermined standard?
 - What standard does this service achieve?
 - Test new standard
 - Evaluating /comparing
 - Experiences/relationships



Reporting of data ...



KPI



- CQUINS, KPI's
- What are we looking at and why?
- Promotion of research to CCG's.
- How do we influence?

National audits ...

- Achieving a standard that has been proved through research
- Reporting existing data
- Collecting additional data
- Outcomes of research should be co written with patients



Evaluation ...



- Judging the value of something
- Has the activity achieved it's outcomes
- Evaluation tells us if an intervention has worked but also why and how ...
 - Learning lessons
 - Spreading successful interventions
 - Developing new ones



Research implementation & impact and how other organisations such as AHSNs/CLARC's fit in.



We're here to
ask the
AWKWARD
QUESTIONS!

IMPACTFUL
QUESTIONS

In the
COMPLEX MUDDY WORLD
of the **NHS**
lets choose the right tools for the job



Every penny we
SPEND should be
used to
MAKE A DIFFERENCE

THINK OF THE
BIG RISKS
INVOLVED IN NOT
DOING THE BEST
POSSIBLE RESEARCH!



HOW DO WE MAKE THE CASE
FOR RESEARCH & EVALUATION
TO OUR BOSSES?

If we design the research
WITH the evidence user
we increase the chance of
asking the right QUESTIONS

How is IT
BRANDED?

Talk about **EVALUATION** not **RESEARCH**

Seen as
NEED & NOW
and useful!

Seen as
time consuming
& expensive!

CO-PRODUCTION
OF RESEARCH QUESTIONS

MANAGEMENT could
become a **BARRIER** if
they are not **INVOLVED**
in **INITIAL STAGES**

STORIES
are more interesting than
CHARTS



THE **IMPORTANCE** OF
CASE STUDIES
ON HOW USING **Research & Evaluation** has **MADE A DIFFERENCE!**

Think broader, think bigger, make a difference!

Thank you

